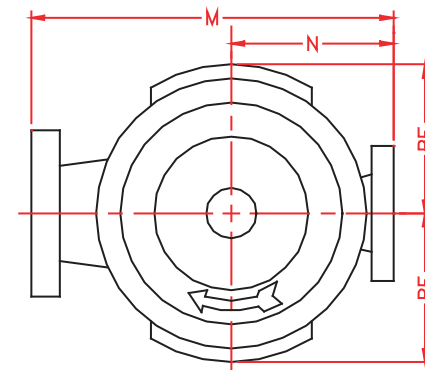
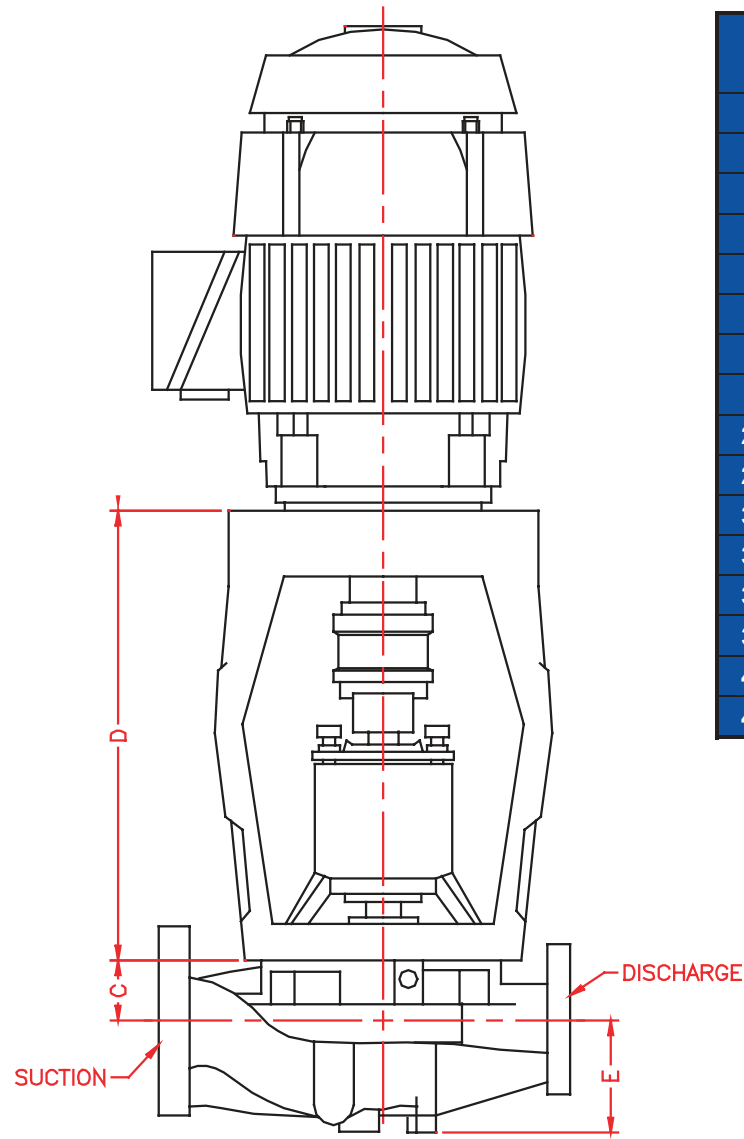


# Model 2996 Dimensional Data

## DIMENSIONS DETERMINED BY MOTOR

	D			
	STO 6"	STO 8"	MTO 10"	MTO 13"
143TC	17.5	N/A	N/A	N/A
145TC	17.5	N/A	N/A	N/A
182TC	19.25	19.9	25	
184TC	19.25	19.9	25	
213TC	19.25	19.9	25	
215TC	19.25	19.9	25	
254TC	19.25	19.9	25	
256TC	19.25	19.9	25	
284TSC	19.25	19.9	25	
286TSC	19.25	19.9	25	
324TSC	N/A	N/A	27	
326TSC	N/A	N/A	27	
364TSC	N/A	N/A	27	
365TSC	N/A	N/A	27	
404TSC	N/A	N/A	27	
405TSC	N/A	N/A	27	

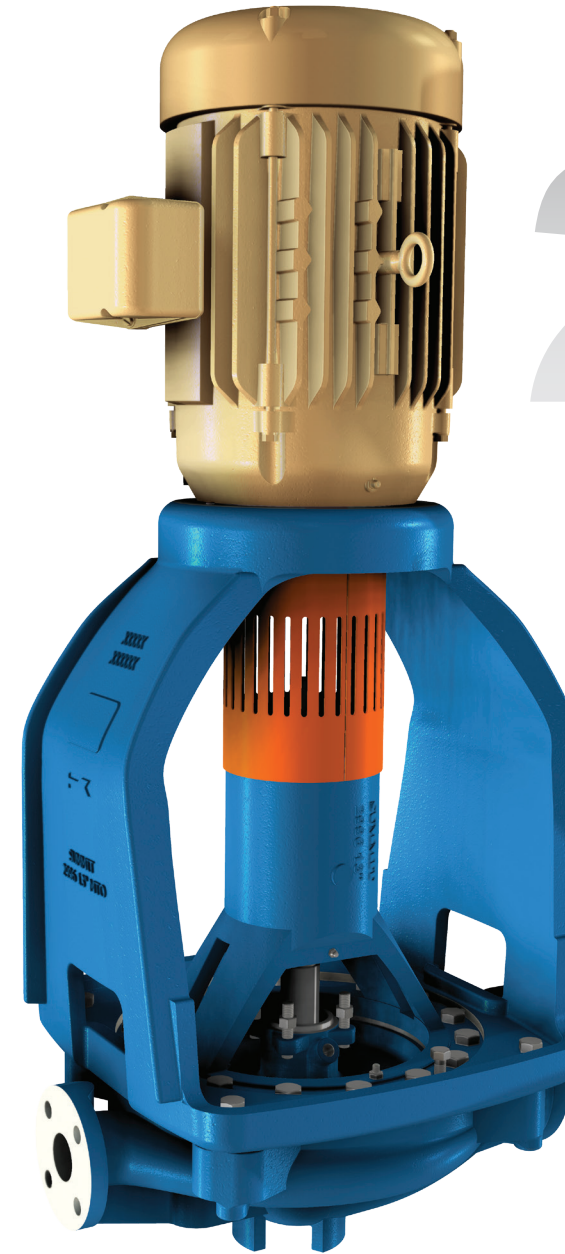


## PUMP DIMENSIONS

Pump Frame	Pump Size	Discharge (in)	Suction (in)	C inch (MM)	E inch (MM)	M inch (MM)	N inch (MM)	BE inch (MM)	Pump Weight (Less Motor) LBS (KGS)
STO	1.5X2-6	1 1/2	2	2 1/8 (54)	4 1/2 (114)	15 (381)	6 3/4 (171)	6 1/2 (165)	190 (86)
	2X3-6	2	3	2 3/16 (56)	4 7/8 (1118)	17 (432)	7 1/2 (191)	6 1/2 (165)	205 (93)
	1.5X3-8	1 1/2	3	1 11/16 (43)	5 1/4 (133)	19 (483)	8 3/8 (213)	6 5/8 (168)	210 (95)
MTO	1.5X3-10	1 1/2	3	2 3/8 (60)	5 (127)	18 7/8 (479)	9 3/16 (233)	10 (254)	380 (173)
	2X3-10	2	3	2 1/2 (64)	5 1/4 (133)	20 (508)	9 1/2 (241)	10 (254)	390 (177)
	3X4-10	3	4	2 5/8 (67)	6 (152)	25 (635)	11 1/2 (292)	10 (254)	430 (195)
	1.5X3-13	1 1/2	3	2 3/8 (60)	5 5/8 (143)	24 (610)	11 1/2 (292)	10 (254)	460 (209)
	2X3-13	2	3	2 1/2 (64)	5 3/4 (146)	24 (610)	11 1/2 (292)	10 (254)	490 (223)
	3X4-13	3	4	2 5/8 (67)	6 7/8 (175)	28 (711)	13 (330)	10 (254)	520 (236)
	4X6-13	4	6	2 3/4 (70)	8 1/2 (216)	30 (762)	14 (356)	10 (254)	610 (277)

# SUMMIT™

# 2996 ANSI



# 2996

**CAPACITY**  
TO 1,400 GPM

**TEMPERATURE**  
TO 500°F

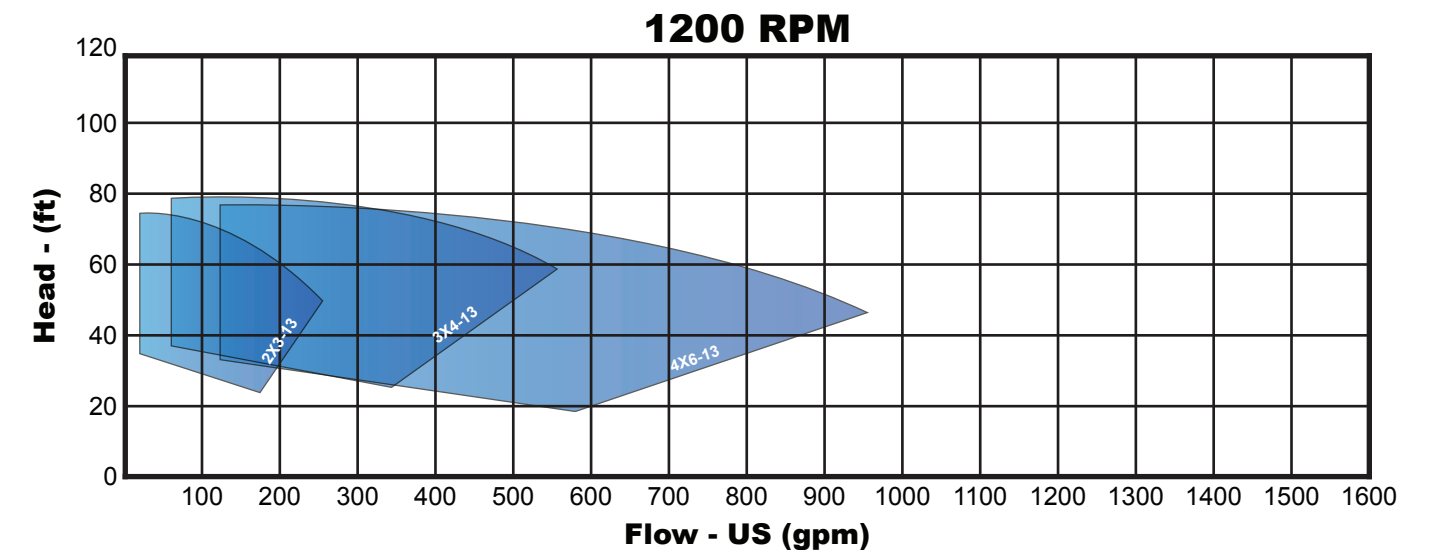
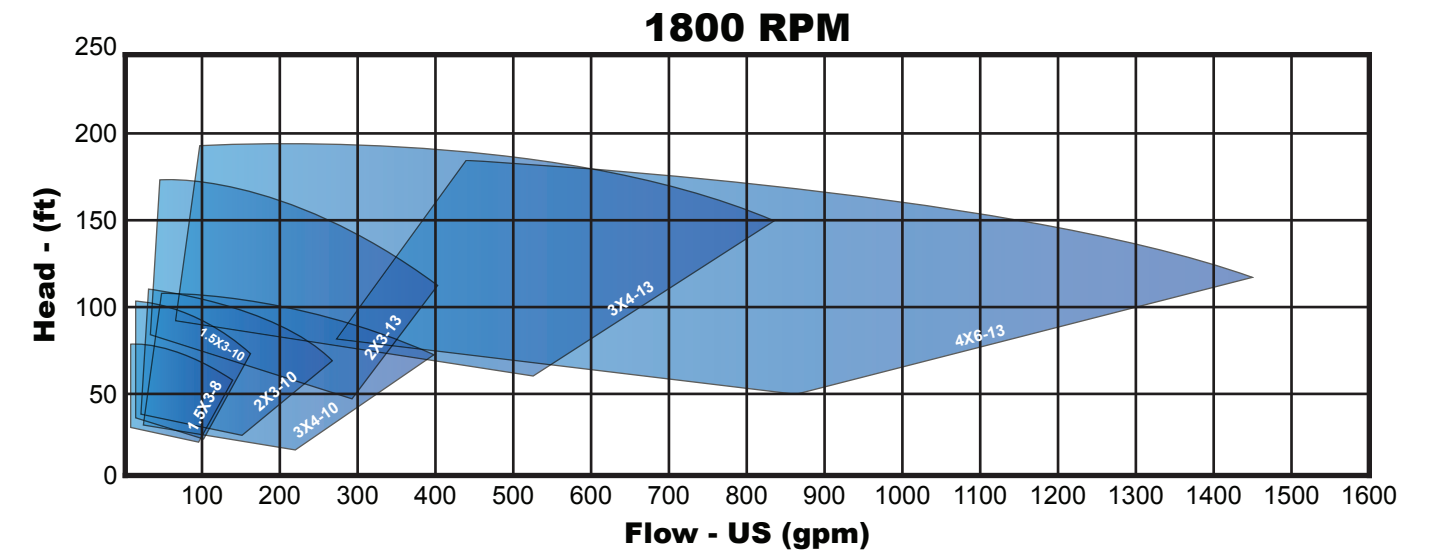
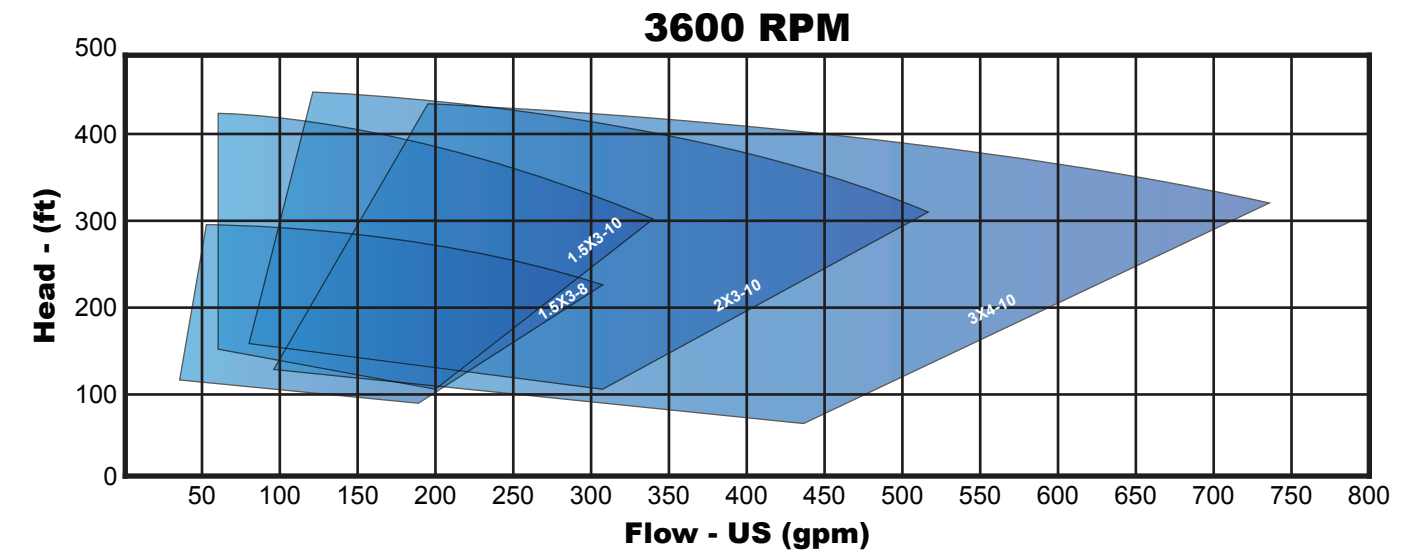
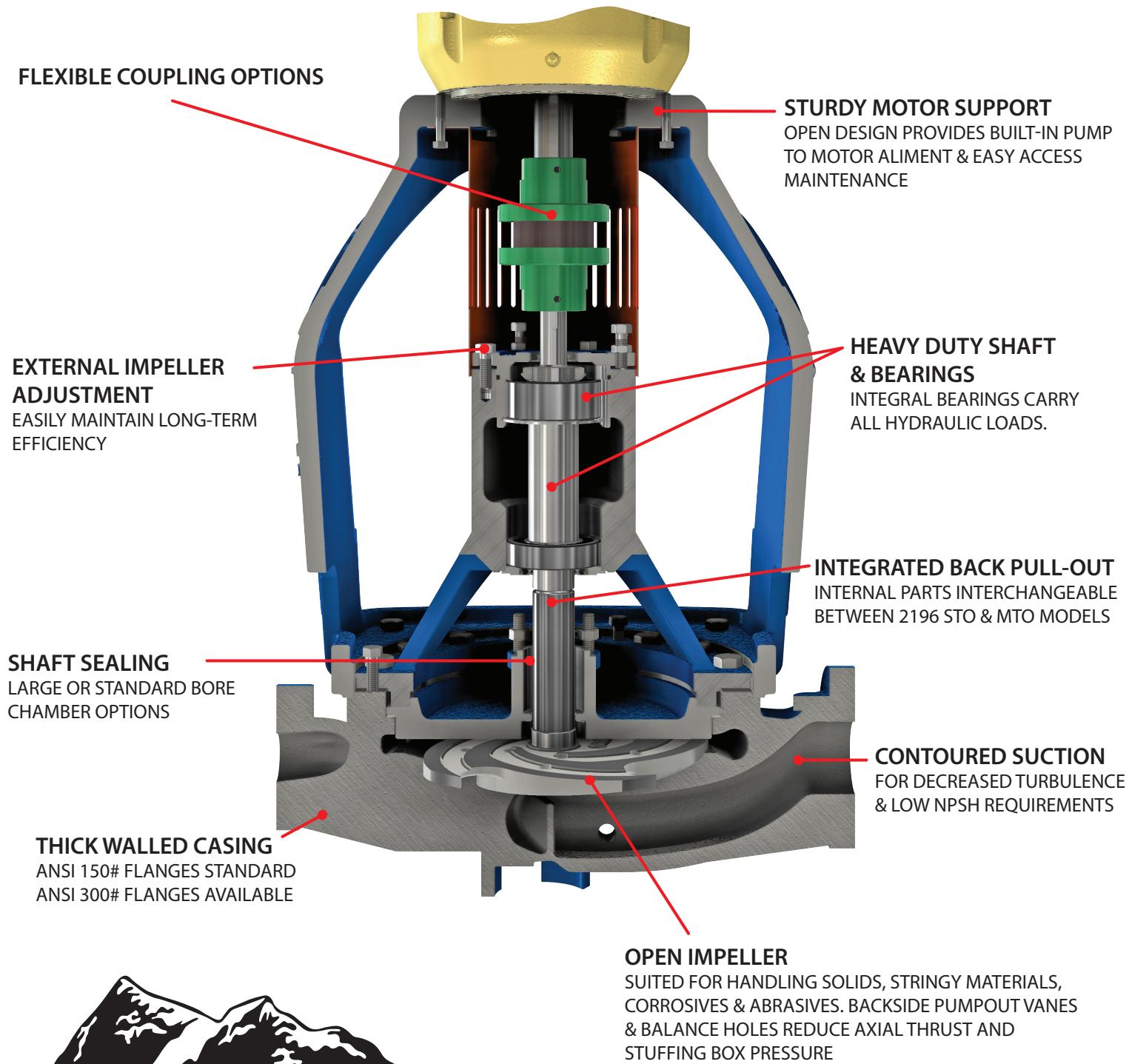
**HEAD**  
TO 655 FEET

## In-Line Process Pump



**SUMMIT™**  
**PUMP, Inc**

www.SUMMITPUMP.com



Note: Performance & Sizing curves are provided for reference only.  
For specific information, contact your distributor or the manufacturer.



**SUMMIT™**  
**PUMP, Inc**

[www.SUMMITPUMP.com](http://www.SUMMITPUMP.com)